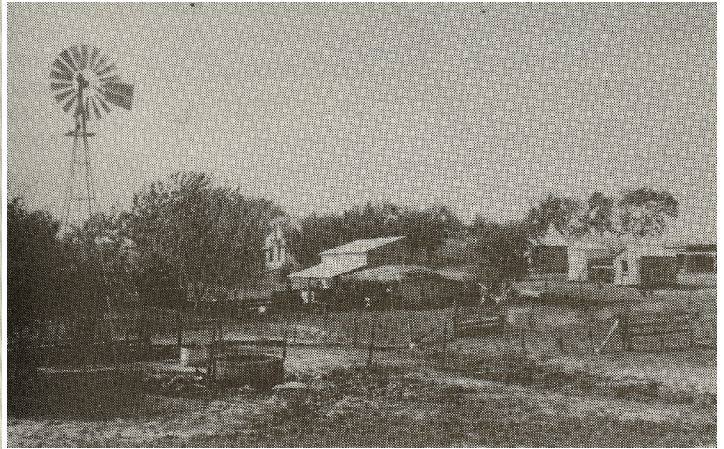


Louise Zeisset and John Swart Farm



- 1860: John Swart born in Mark, Germany to Marten Zwart and Addina Bronlewe
- 1866: Louise Zeisset born in Kreuzfeld, Germany to Jakob Friedrich and Margaretha Mueller Zeisset
- 1872: Swart family comes to America
- 1880: Louise confirmed at Krailshausen, Germany
- 1883: Louise arrived in New York City in July on SS Belgenland from Antwerp
- 1885: Louise comes to Clay Center, Kansas from Pennsylvania where she worked
Bertha and Bettie Zeisset arrive in New York in June
- 1886: Louise and John Swart married in February**
- 1886: Borrow \$2.50 to buy cookstove, bed, table and cheap chairs for home
Rent farm from John's parents 4 miles north of Leonardville**
- 1887: Martha is born; Marten and Addina move into Leonardville
- 1888: George Swart is born
- 1890: Henry Swart is born in January
Jake Zeisset arrives from Germany in February and probably lives with Swarts
- 1891: Lizzie Zeisset arrives from Germany in April; Lillie Swart is born in August
- 1893: Betty Swart is born April 3; Henry Zeisset arrives from Germany April 10 (New York)
- 1895: Emma Swart is born
- 1895: Farm is sold to Peter Skow in October
- 1896: Louise and John Swart family move in March to Adams Twp., Nemaha County**
- 1899: John is born
- 1901: Rosa is born and dies same year
- 1904: 10 stands of bees; 200 pounds of honey produced
- 1907: Emma dies
- 1910: Lillie married Thomas Johnstone
- 1913: George married Zula Gilkerson
- 1914: Martha married Max Krummel and moves to Cloud County, Kansas
Henry married Mary Hailey
- 1916: Betty married Horace Duncan
- 1919: John married Marjorie Chadwick

1925: John Swart was the accessor for the census

Henry Swart had 160 acre farm

George Swart had 840 acre farm

1940: John Swart (father) died

1943: Louise spent winter at Donna, Texas with Lillie and Tom Johnstone

1945: Louise died in car accident in Dallas, Texas

Kansas Agricultural Census
Swart

	1895	1905	1915	1925
acres	240	520	680	
cultivated	170			
corn	100	200	140	
oats	45	25		
millet	6	50		
potatoes		2	1/2	
Kafir corn			3	
Wheat, acres			92	
Prairie hay				
sorghum				
Sudan grass				
Bushels of wheat on hand			2000	
Bushels of corn on hand		600	300	
Tons of hay cut		50		
Pounds of butter churned	200		200	
Dollars of dairy product sold		320	200	
Dollars of poultry/eggs sold		520	300	
Horses	8	9	14	
Milk cows	7	12	7	
Other cattle	12	120	35	
swine	18	80	62	
dogs	2		1	
sheep				
hens				