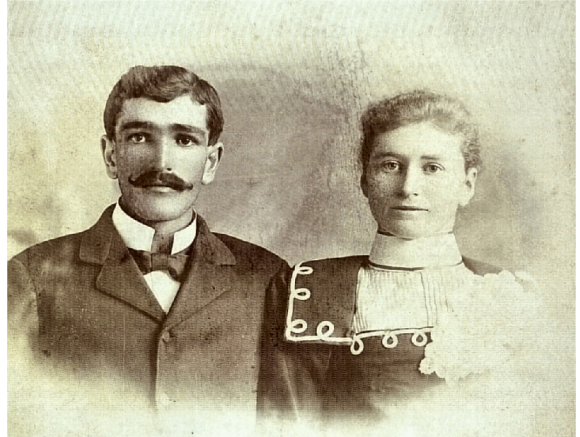


# Bettie Zeisset and Ludwig Hoerman Farm

## Timeline

- 1875: Bettie (Barbara) Zeisset born in Kreuzfeld, Germany to Jakob Friedrich Zeisset and Margaretha Mueller
- 1881: Margaretha Mueller dies
- 1884: Jakob Friedrich Zeisset dies
- 1884: Bettie and Henry go to Niedersteinach to live with uncle Johannes Zeisset
- 1885: Bettie comes to America with sister Bertha in June on SS Fulda from Bremen to New York and then take train to Kansas where they go to Alida with the Baer family and then to Riley County
- 1886: Bettie joins the German Methodist church with Peter and Lena Baer  
Attends school at Crooked Creek
- 1893: Studies dressmaking with Mrs. Stadel
- 1895: Bettie works for J. A. Sparks, banker in Leonardville; lives across from Leonardville City Park
- 1899: Bettie marries Ludwig Hoerman;** Bettie and Lou rent farm in Highland Twp., Clay County
- 1900: Lou buys 13 head of cattle for \$35 a head
- 1901: Lawrence is born
- 1902: Lou and Bettie buy farm from John Nelson in February**
- 1903: Built barn
- 1903: Bala tornado brings screen door to Hoerman home
- 1904: Twins born, only Louise survives; Gladess buried on the farm
- 1905: Wilbert born
- 1910: Twins Gertrude and Gladys born
- 1911: Lou's father, John Hoerman, dies; mother Catherine moves to Leonardville
- 1918: John born
- 1919: John dies
- 1923: Catherine Hoerman dies
- 1926: Louise marries Herman Cott at the Hoerman home and move to Milford, Kansas
- 1933: Gertrude marries Carl Platz
- 1935: Lawrence dies from lymphoma at Milford
- 1936: Lou Hoerman dies from complications of appendicitis in Clay Center hospital**  
Wilbert takes over management of the farm
- 1945: Gladys marries John Llewelyn at Lost Springs, Kansas
- 1949: Oldest part of the house is torn down, the newer part is moved to Leonardville and is still standing, having survived a fire; new house is built**  
Bettie is losing her eyesight due to pemphigus
- 1954: Wilbert marries Mae Johnson  
**Bettie lives with Gladys and John one mile north of the Hoerman home**
- 1968: Bettie moves to a nursing home in Hutchinson, Kansas, where Gertrude starts working
- 1970: Bettie dies at the age of 94 in Hutchinson**
- 1979: Wilbert dies in Topeka, Kansas from heart attack
- 1980: Mae moves to new home in Leonardville  
Gary and Carla Hageman rent Hoerman home and move in January 1981





	1895	1905	1915	1925
acres		240	240	400
cultivated				
Corn, acres		40	50	100
Oats, acres		25	20	50
Millet, acres			5	3
Potatoes, acres			1/4	
Kafir corn, acres				5
Wheat, acres		35	40	60
Prairie hay, acres				100
Sorghum, acres			5	5
Sudan grass, acres				
Bushels of wheat on hand				1000
Bushels of corn on hand				400
Tons of hay cut		60		
Pounds of butter churned		500	50	300
Dollars of dairy product sold			400	
Dollars of poultry/eggs sold			200	
Horses		6	7	9
Milk cows		5	3	6
Other cattle		23	25	48
swine		53	35	36
dogs			1	2
sheep			9	60
hens				180

Kansas Agricultural  
Census—Hoerman Farm